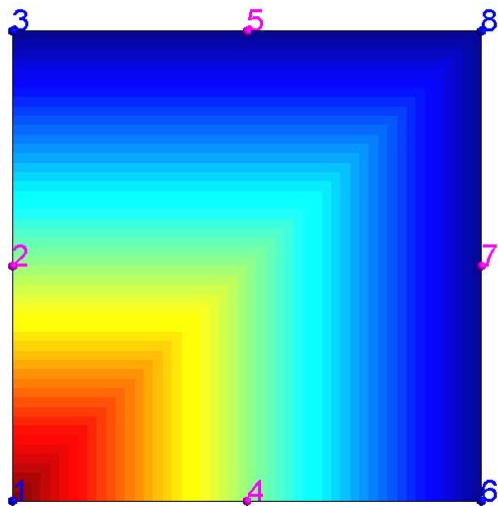
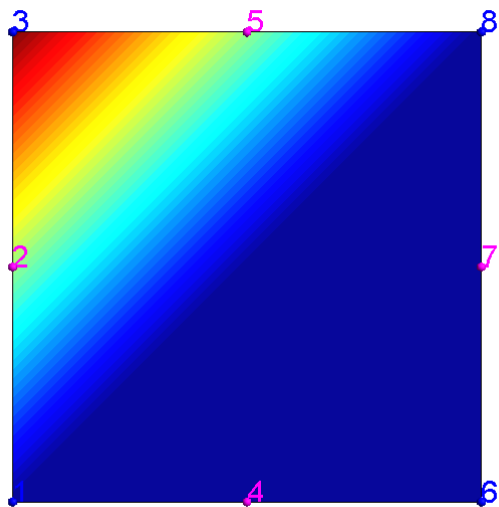


One 8-node quadrangle is used and values are assigned on nodes.
Node number and iso-values contour is drawn by using Gmsh.
An .msh file is shown in the last in this documents.

Values at nodes are
1.0 for node #1
0.0 for others

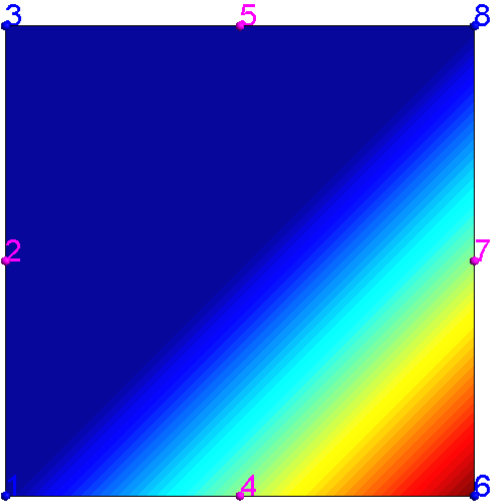


1.0 for node #3
0.0 for others



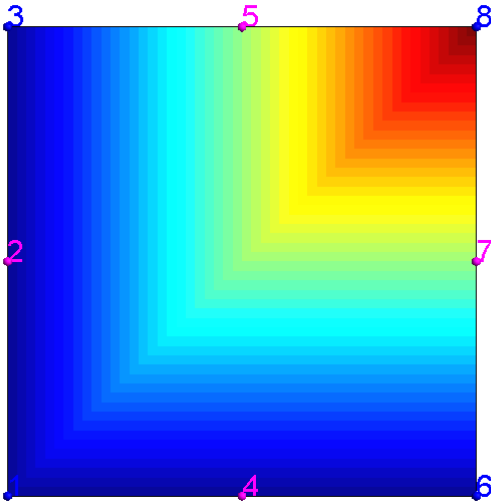
1.0 for node #6

0.0 for others



1.0 for node #8

0.0 for others



\$MeshFormat

2.1 0 7

\$EndMeshFormat

\$Nodes

8

1	0.0000	0.0000	0.0
2	0.0000	0.5000	0.0
3	0.0000	1.0000	0.0
4	0.5000	0.0000	0.0
5	0.5000	1.0000	0.0
6	1.0000	0.0000	0.0
7	1.0000	0.5000	0.0
8	1.0000	1.0000	0.0

\$EndNodes

\$Elements

1

1 16 0 1 6 8 3 4 7 5 2

\$EndElements

\$NodeData

1

"Equivalent strain"

1

0.00000

3

0

1

8

1 1.0000

2 0.0000

3 0.0000

4 0.0000

5 0.0000

6 0.0000

7 0.0000

8 0.0000

\$EndNodeData